



>> TFR List

>> TFR Map

>> Map Airports

>> TFR Help

>> PilotWeb



Zoom In



Zoom Out



Zoom US



Zoom AK



Zoom HI



Zoom PR



Zoom CB

Select Center to zoom

Select a Center



Go

Select State to zoom

Select a State



Go

Select Scale to zoom



Map Layers

NOTAMs

Military Operating Areas

Prohibited, Warning
Restricted, Alert Areas

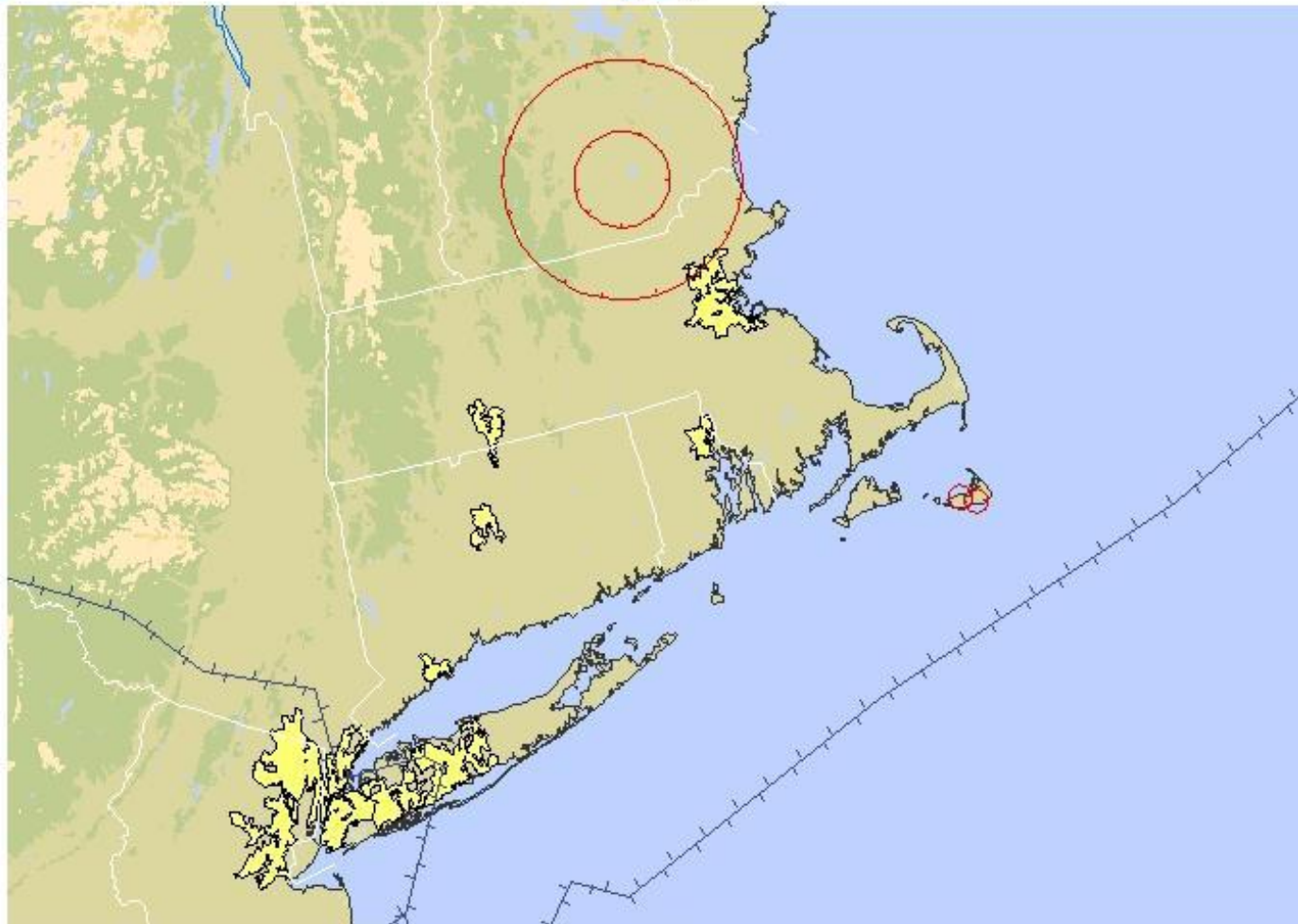
Major Cities

Interstates

Centers

Rivers

Political Boundaries





Federal Aviation
Administration

FAA.gov Home

[TFR List](#)

[TFR Map](#)

[Map Airports](#)

[TFR Help](#)

[PilotWeb](#)

[SUA](#)

NOTAM

Number : FDC 1/6553 Download shapefiles
Issue Date : November 20, 2011 at 2121 UTC
Location : Manchester, New Hampshire
Beginning Date and Time : November 22, 2011 at 1530 UTC
Ending Date and Time : November 22, 2011 at 1900 UTC
Reason for NOTAM : Temporary flight restrictions for VIP Movement
Type : VIP
Replaced NOTAM(s) : N/A

Jump To: [Affected Areas](#)
[Operating Restrictions and Requirements](#)
[Other Information](#)

Affected Area(s)

Area A

Airspace Definition:

On the MANCHESTER VOR/DME (MHT) 343 degree
Center: radial at 6.6 nautical miles. (Latitude: 42°57'42"N,
 Longitude: 71°26'56"W)
Radius: 30 nautical miles
Altitude: From the surface up to but not including 18000 feet
 MSL

Effective Date(s):

From November 22, 2011 at 1530 UTC (November 22, 2011 at
 1030 EST)
 To November 22, 2011 at 1900 UTC (November 22, 2011 at
 1400 EST)

Area B

Airspace Definition:

On the MANCHESTER VOR/DME (MHT) 343 degree
Center: radial at 6.6 nautical miles. (Latitude: 42°57'42"N,
 Longitude: 71°26'56"W)
Radius: 12 nautical miles
Altitude: From the surface up to but not including 18000 feet
 MSL

Effective Date(s):

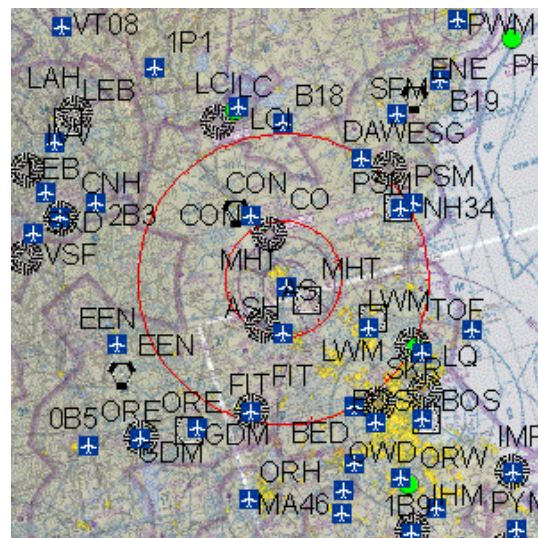
From November 22, 2011 at 1530 UTC (November 22, 2011 at
 1030 EST)
 To November 22, 2011 at 1900 UTC (November 22, 2011 at
 1400 EST)

Operating Restrictions and Requirements

No pilots may operate an aircraft in the areas covered by this NOTAM (except as described).

Except as specified below and/or unless authorized by ATC in consultation with the air traffic security coordinator via the domestic events network (DEN):

A. All aircraft operations within the 12 NMR area(s) listed above, known as the inner core(s), are prohibited except for: Approved law enforcement, military aircraft directly supporting the United States Secret Service (USSS) and the office of the President of the United States, approved air ambulance flights, and regularly scheduled commercial passenger and all-cargo carriers operating under one of the following TSA-Approved standard security programs/procedures: aircraft operator standard security program (AOSSP), full all-



Top

[Click for Sectional](#)

[NOTAM Text](#)

Top

cargo aircraft operator standard security program (FACAOSSP), model security program (MSP), twelve five standard security program (TFSSP) all cargo, or all-cargo international security procedure (ACISP) and are arriving into and/or departing from 14 cfr part 139 airports. All emergency/life saving flight (medical/law enforcement/firefighting) operations must coordinate with ATC prior to their departure at 603-594-5552 to avoid potential delays.

B. For operations within the airspace between the 12 nmr and 30 nmr area(s) listed above, known as the outer ring(s): All aircraft operating within the outer ring(s) listed above are limited to aircraft arriving or departing local airfields, and workload permitting, ATC may authorize transit operations. Aircraft may not loiter. All aircraft must be on an active IFR or VFR flight plan with a discrete code assigned by an air traffic control (ATC) facility. Aircraft must be squawking the discrete code prior to departure and at all times while in the TFR and must remain in two-way radio communications with ATC.

C. The following operations are not authorized within this TFR: flight training, practice instrument approaches, aerobatic flight, glider operations, seaplane operations, parachute operations, ultralight, hang gliding, balloon operations, agriculture/crop dusting, animal population control flight operations, banner towing operations, sightseeing operations, maintenance test flights, model aircraft operations, model rocketry, unmanned aircraft systems (UAS), and utility and pipeline survey operations.

D. FAA recommends that all aircraft operators check notams frequently for possible changes to this TFR prior to operations within this region.

Other Information:

[Top](#)

ARTCC: ZBW - Boston Center
Authority: Title 14 CFR section 91.141

Depicted TFR data may not be a complete listing. Pilots should not use the information on this website for flight planning purposes. For the latest information, call your local Flight Service Station at 1-800-WX-BRIEF.



Federal Aviation
Administration

>> TFR List

>> TFR Map

>> Map Airports

>> TFR Help

>> PilotWeb



Zoom In



Zoom Out



Zoom US



Zoom AK



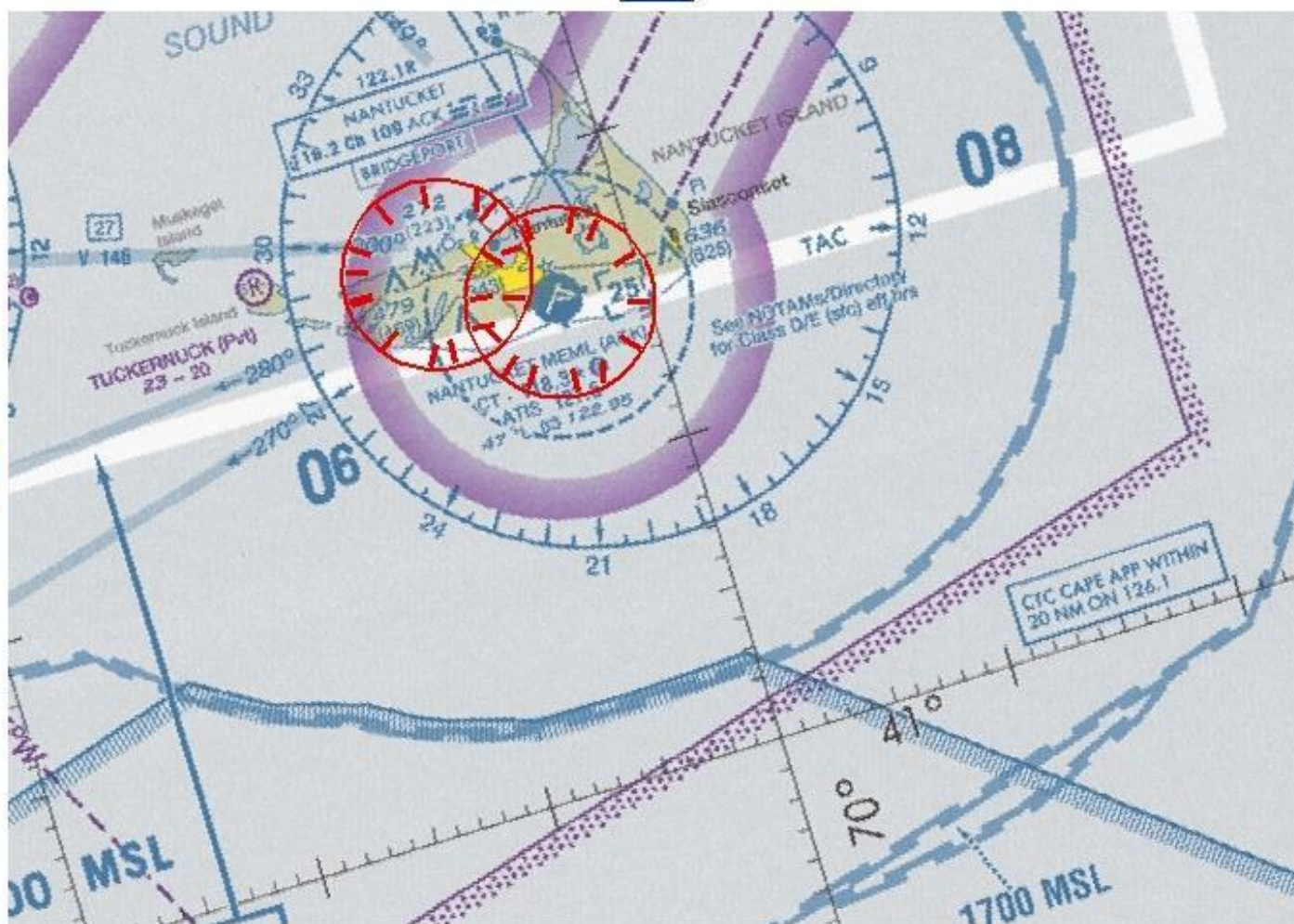
Zoom HI



Zoom PR



Zoom CB



Select Center to zoom

Select a Center



Go

Select State to zoom

Select a State



Go

Select Scale to zoom



Map Layers

NOTAMs

Backdrop: US VFR Sectional
Aeronautical Chart



Federal Aviation
Administration

FAA.gov Home

[TFR List](#)

[TFR Map](#)

[Map Airports](#)

[TFR Help](#)

[PilotWeb](#)

[SUA](#)

NOTAM

Number : FDC 1/6540 Download shapefiles
Issue Date : November 20, 2011 at 1419 UTC
Location : Nantucket, Massachusetts
Beginning Date and Time : November 22, 2011 at 2245 UTC
Ending Date and Time : November 28, 2011 at 0459 UTC
Reason for NOTAM : Temporary flight restrictions for VIP Movement
Type : VIP
Replaced NOTAM(s) : N/A

Jump To: [Affected Areas](#)
[Operating Restrictions and Requirements](#)
[Other Information](#)

Affected Area(s)

Top

Area A

Airspace Definition:

On the NANTUCKET VOR/DME (ACK) 236 degree
 Center: radial at 2.3 nautical miles. (Latitude: 41°15'13"N,
 Longitude: 70°03'36"W)
 Radius: 3 nautical miles
 Altitude: From the surface up to but not including 3000 feet AGL

Effective Date(s):

From November 22, 2011 at 2245 UTC (November 22, 2011 at
 1745 EST)
 To November 23, 2011 at 0100 UTC (November 22, 2011 at
 2000 EST)

Area B

Airspace Definition:

On the NANTUCKET VOR/DME (ACK) 288 degree
 Center: radial at 5 nautical miles. (Latitude: 41°17'11"N,
 Longitude: 70°08'10"W)
 Radius: 3 nautical miles
 Altitude: From the surface up to but not including 3000 feet AGL

Effective Date(s):

From November 22, 2011 at 2300 UTC (November 22, 2011 at
 1800 EST)
 To November 28, 2011 at 0459 UTC (November 27, 2011 at
 2359 EST)

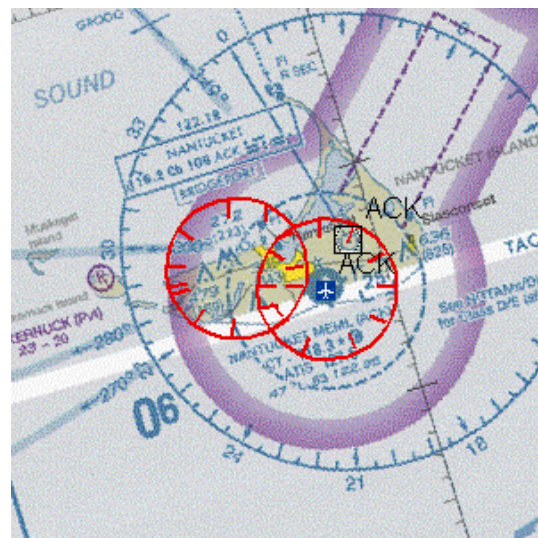
Operating Restrictions and Requirements

Top

No pilots may operate an aircraft in the areas covered by this NOTAM (except as described).

Except the flight operations listed below:

1. All IFR arrivals or departures to/from airports within this TFR.
2. Approved; law enforcement, fire fighting, military aircraft directly supporting the united states secret service (USSS) and the office of the vice president of the united states, and MEDEVAC /air ambulance flights.
3. Aircraft operations necessitated for safety or emergency reasons.
4. Aircraft that receive ATC authorization in consultation with the air traffic security coordinator (ATSC) via the domestic events network(DEN).



[Click for Sectional](#)

[NOTAM Text](#)

Unless otherwise authorized by ATC.

Other Information:[Top](#)

ARTCC:

ZBW - Boston Center

Authority:

Title 14 CFR section 91.141

Depicted TFR data may not be a complete listing. Pilots should not use the information on this website for flight planning purposes. For the latest information, call your local Flight Service Station at 1-800-WX-BRIEF.

Federal Aviation Administration | 800 Independence Avenue, SW | Washington DC, 20591